

# PREFUMO

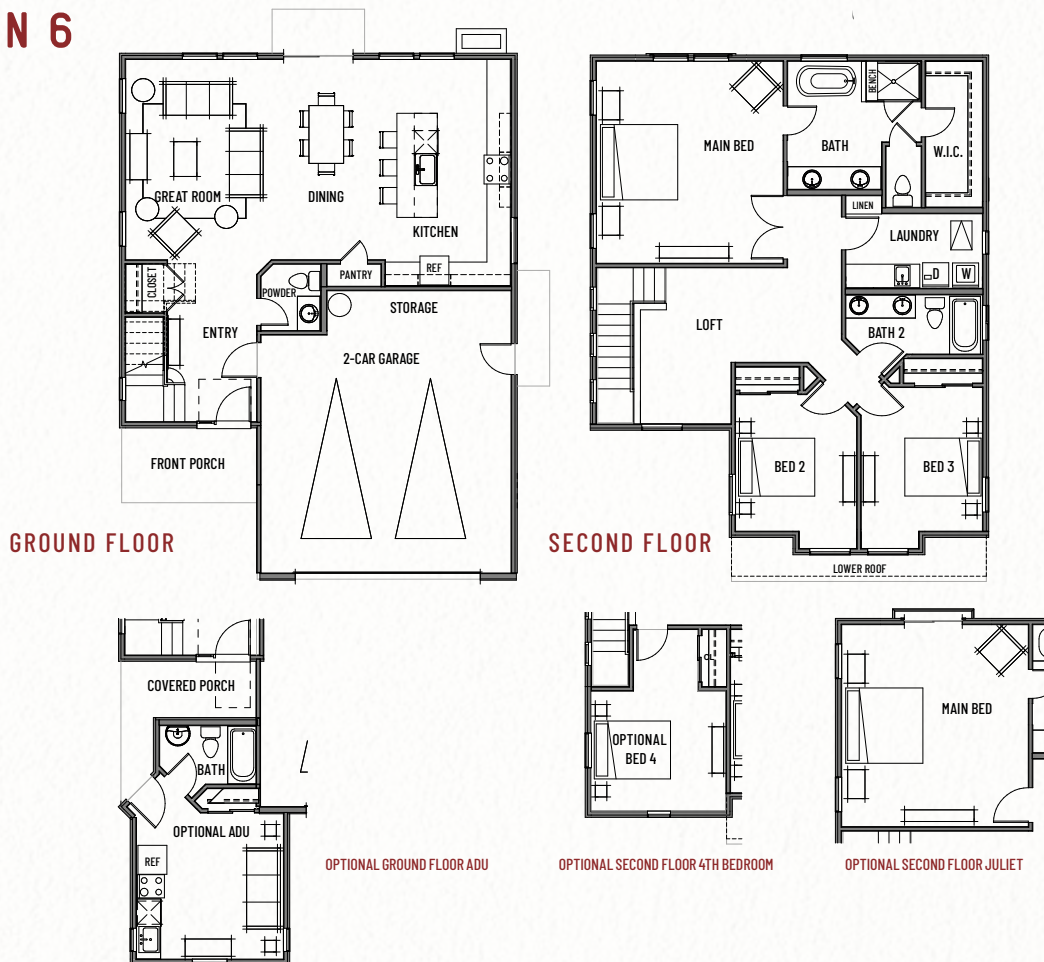


**FARMHOUSE**

**CRAFTSMAN**

APPROX. 2,170 SQ FT / 3 BEDS / 2.5 BATHS / OPTION: 1ST FLOOR ADU / 2ND FLOOR 4TH BED & ADU, 2ND FLOOR BALCONY

## PLAN 6



In an effort to meet consumer expectations, Coastal Community Builders reserves the right to make changes or modifications to maps, plans specifications, materials, features, and colors without notice. All renderings are artist conceptions and are not intended to be literal depictions of the buildings, fences, walks, driveways or landscaping. Special wall and window treatments, upgraded floor coverings, softscape, hardscape, landscape, and other items featured in and around the model homes are decorator suggested and not included in the purchase price. Residents are automatically included in the Homeowners' Association and are subject to Special Assessments and Community Facility Fees. Ask your Sales Representative for details. Plans to build out this project as proposed are subject to change without notice. SLO Ranch Realty, Inc DRE #02133544.

